

# Une Traversée

A show by the *Tchaïka Company*

Freely inspired by *The Journey Through the Looking Glass* by Lewis Carroll



**Technical rider**  
November 2025

**Production Manager**

Charlotte Evrard - [administration@tchaika.art](mailto:administration@tchaika.art)

**Technical Direction and Lighting Design**

Aurélie Perret - (+32) 474 95 93 85 - [aurele.perret@gmail.com](mailto:aurele.perret@gmail.com)

**Duration:** approximately 60 min



# Une Traversée

## **TECHNICAL SPECIFICATIONS**

**This technical rider is an integral part of the contract.**

The purpose of this document is to provide the technical information that can be confirmed at this stage. Once contact has been established between the hosting venue and our company, the technical rider will be adapted according to the venue's specific facilities.

This document gives an overview of the equipment we provide and of the equipment to be supplied by the organiser. Please do not hesitate to contact us for any additional information. This means that the organiser must, on their own initiative and at their own expense, comply with all technical requirements (equipment and staff). Exceptions may only be made by written agreement signed by both parties.

### **Documents to be provided**

- > The theatre's address and a location map.
- > A scaled technical drawing (ground plan and section) of the stage and auditorium, including a list of available stage, lighting and sound equipment.
- > Photographs of the venue (stage and seating).
- > Name and contact details of the technical manager.

### **Touring team**

The touring team consists of **6 to 8 people**, depending on requirements:

- > 1 director
- > 3 performers
- > 3 stage managers / technicians
- > 1 production manager / surtitling operator

- > **Latecomers are not permitted to enter the auditorium during the performance.**
- > **The auditorium must be completely free of any stray or parasitic light (control lights, emergency lights, etc.).**

### **1. STAGE**

- > Flat stage
- > Ideal dimensions: **10 x 10 m**
- > Minimum height: **7 m to grid**
- > Minimum dimensions: **9 x 8 m**
- > Floor: black dance floor covering the entire stage surface unless a black floor is already installed
- > Masking: black backdrop + legs + borders (see plan)

## 2. SET

The scenographic setup consists of several scenic elements suspended from the grid using pulleys, as well as several elements on the floor. Set changes are carried out by the performers on stage. The stage is partially covered with black artificial snow, and a fall of black snow occurs at the beginning of the performance.

### To be provided by the organiser

- Black dance floor covering the entire stage (if no black floor)
- Masking according to plan and venue configuration
- Ballast weights (8 × 12 kg)
- If the grid is not fixed: equipment to guy the bars supporting the machinery
- Genie lift and ladders
- 1 stage manager present for all rehearsals and performances
- Intercom between stage (stage left) and lighting control

### Provided by the company

- 2 pulley combs
- 14 pulleys + ropes
- 2 A-frames
- 7 hanging and release systems for drapes attached to the grid
- 1 snow hopper
- 1 PVC tube shelf with fabric interior
- 1 rug
- 1 wooden frame ("The Train")
- 7 drapes (mosquito nets)
- 1 chair
- 1 table

## 3. SOUND

### To be provided by the organiser

- The control desk must be located in the auditorium or be open to it
- PA system adapted to the venue (minimum: 2 subs + FOH + mono centre), type L-Acoustics Arcs + subs
- 2 rear speakers on stands (e.g. Meyer UPA, L-Acoustics XTi2 / 12X, Nexo PS15)
- 2 monitor speakers on stands (same type as above)
- 2 or 4 auditorium speakers, stereo surround diffusion, 12" or 15", adapted to the venue
- All outputs must be separate
- Digital mixing console (minimum 16 in / 12 out), e.g. Yamaha QL1, QL5, CL, MIDAS M32, Allen & Heath SQ5
- All necessary cabling
- 1 dimmable control lamp
- 1 router in the auditorium to allow control of the console and the software used by the company

### Provided by the company

- 1 control computer with Ableton Live + MIDI controller
- 1 Motu 828ES audio interface

## 4. LIGHTING

### To be provided by the organiser

- 1 haze machine (Unique / Look Solutions type)
- 13 profile spots 614 SX Robert Juliat or equivalent
- 2 profile spots 613 SX Robert Juliat or equivalent
- 5 PC 1 kW with barndoors and filter frames
- 7 PAR CP 62
- 7 PAR CP 60
- 6 LED Beam 350 Robe or equivalent
- 2 Fresnel 2 kW
- 3 lighting ladders or stands
- 3 base plates
- All necessary cabling

All lighting fixtures must be equipped with gel frames, safety bonds, shutters and barndoors.

- Gels: L711, L742, L124, L019, L025, L118, L071 + diffusion filters (see plan)

### Provided by the company

- 1 lighting control computer with DLight + ENNTEC interface + MIDI controller
- 1 small smoke machine

## 5. COSTUMES & DRESSING ROOMS

The company arrives with clean costumes. In the case of multiple performances, maintenance is required after each show.

The team must have access to a heated dressing room with table and mirror, as well as a shower. Bottled water must be provided, along with catering (fruit, biscuits, chocolate, tea, coffee, etc.).

## 6. ACCESS & PARKING

The stage management team must be able to park a van in a **free and secure parking area** from arrival until departure.

## 7. SCHEDULE

Typical schedule at D-1, with pre-rigging of sound, lighting and stage grid before our arrival.

This schedule configuration is valid only after prior review of the venue plans and pre-approval by the hosting venue.

### Crew required at D-1 (excluding company technicians):

- 2 lighting technicians
- 1 sound technician
- 2 stage technicians

**IMPORTANT:** the same stage manager must be present for rehearsals and performances (see attached documents and photos).











### D-1

- 09:00–13:00: unloading set / set construction / installation of control desks (2 stage / 1 lighting / 1 sound)
- 13:00–14:00: break
- 14:00–18:00: continuation of setup + start of lighting focus (1 sound / 2 stage / 2 lighting)
- 18:00–20:00: sound intermission (1 sound)
- 20:00–22:00: continuation of lighting focus (2 lighting / 1 stage)

### D-0

- 09:00–10:00: sound setup (1 sound)
- 10:00–13:00: lighting cues + stage cues (1 stage / 1 lighting)
- 13:00–14:00: break / sound intermission (1 sound)
- 14:00–15:00: lighting adjustments (1 lighting / 1 stage)
- 15:00–17:00: technical run-through (1 sound / 1 lighting / 1 stage)
- 17:00–18:30: corrections (1 sound / 1 lighting / 1 stage)
- 18:30–19:30: preset (2 stage) — **note: preset carried out using the Genie lift**
- 20:00–21:00: audience entry + performance
- 21:00–00:00: strike and load-out

LUMIERE UNE TRAVERSEE /// LUMIERE GENERIQUE decembre 2025

-  13 x découpes LED 654sx
-  2 x découpes LED 653sx
-  5 x PC 1000 W
-  2 x Fresnel 2kW
-  7 x PAR 64 CP 62
-  7 x PAR 64 CP 60
-  6 x LED BEAM 350
-  3 échelles lumières
-  3 platines
-  machine à brouillard

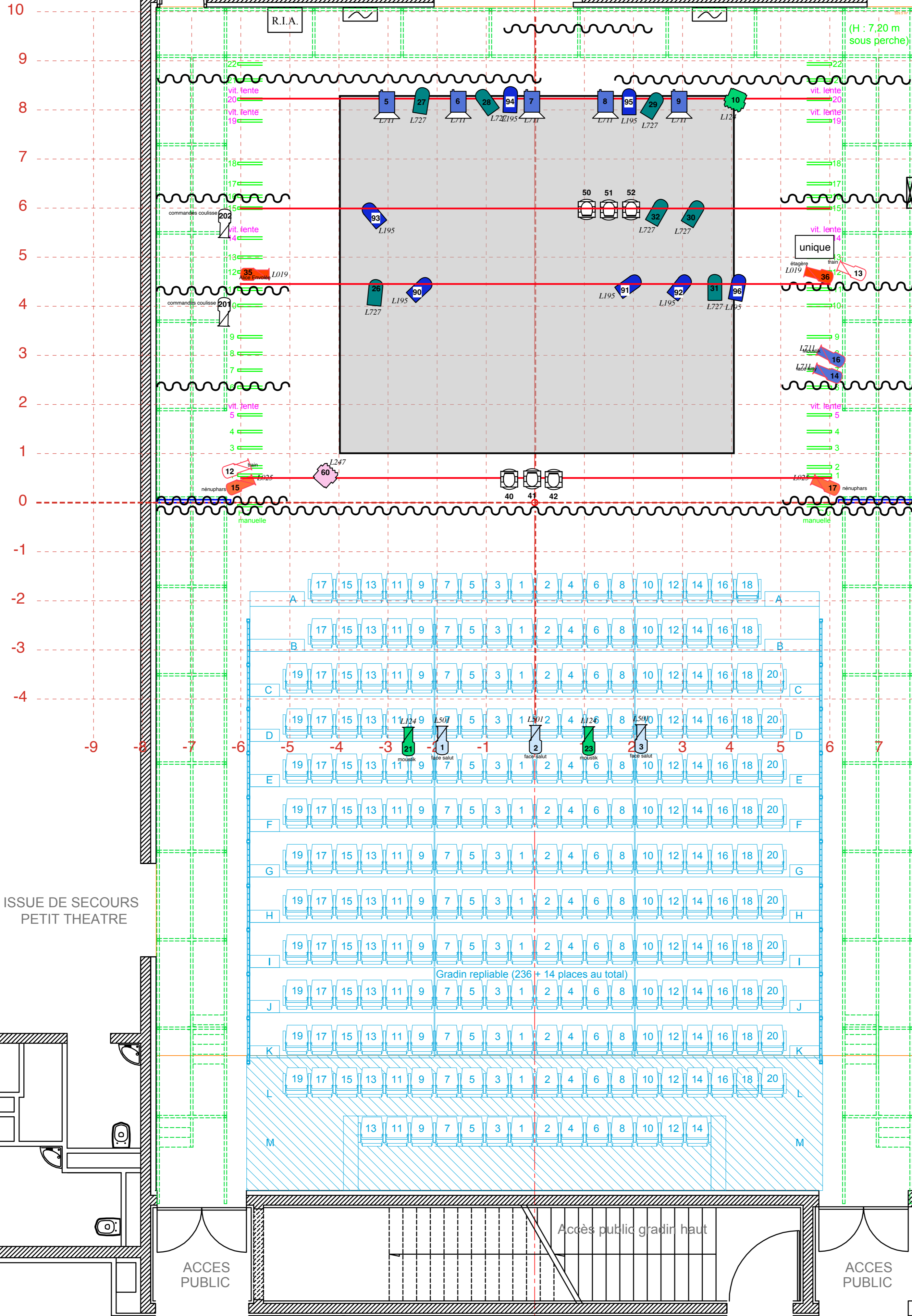
circuits sol : 12 -> 17 + 35 et 36

VIDE  
ZONE COMMUNE  
D'ACCES DES DECORS  
AUX DEUX SALLES

ACCES  
JARDIN

PORTE ACCES  
DECORS  
L. 2,80x H. 3,60m

ACCES  
COUR



ISSUE DE SECOURS  
PETIT THEATRE

ACCES  
PUBLIC

Accès public gradin haut

ACCES  
PUBLIC

FOYER PUBLIC

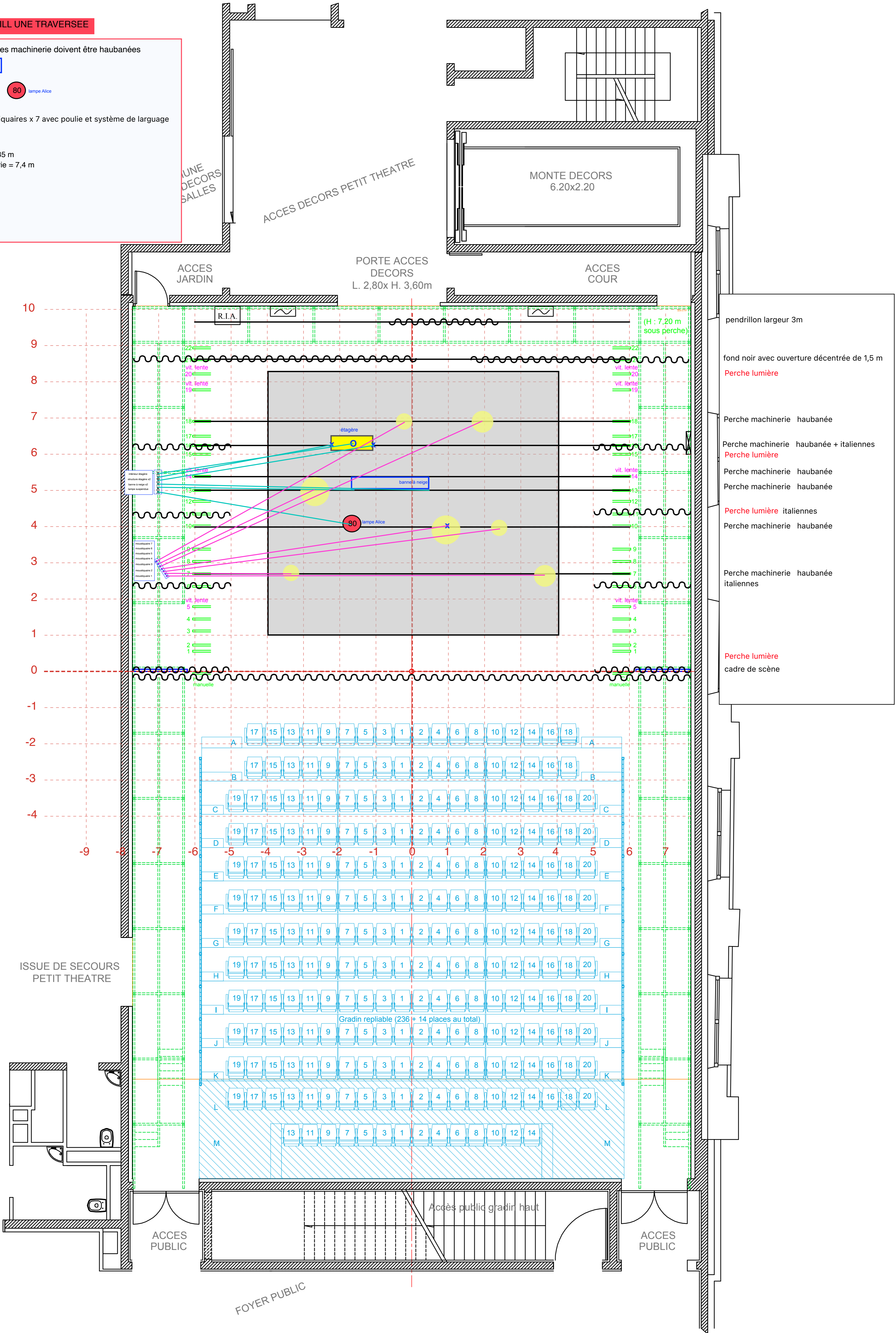
Ch	DIMMER	Projecteur	quantité	lampe	Filtre	Diffusant
1		découpe LED 614 ou PC	1		L501	119
2		découpe LED 614 ou PC	1		L501	119
3		découpe LED 614 ou PC	1		L501	119
5		PC 1kW	1		L711	119
6		PC 1kW	1		L711	119
7		PC 1kW	1		L711	119
8		PC 1kW	1		L711	119
9		PC 1kW	1		L711	119
10		Fresnel 2 kW	1		L124	
12		découpe LED 614	1		NC	
13		découpe LED 614	1		NC	
14		découpe LED 614 ou PC	1		L711	
15		découpe LED 614 ou PC	1		L025	
16		découpe LED 614 ou PC	1		L711	
17		découpe LED 614 ou PC	1		L025	
21		découpe LED 614 ou 2kW	1		L124	GOBO
23		découpe LED 614 ou 2kW	1		L124	GOBO
26		PAR 64	1	CP62	L727	
27		PAR 64	1	CP62	L727	
28		PAR 64	1	CP62	L727	
29		PAR 64	1	CP62	L727	
30		PAR 64	1	CP62	L727	
31		PAR 64	1	CP62	L727	
32		PAR 64	1	CP62	L727	
35		découpe LED 614 ou PC	1		L019	
36		découpe LED 614 ou PC	1		L019	
40		LED Beam 350	1			
41		LED Beam 350	1			
42		LED Beam 350	1			
50		LED Beam 350	1			
51		LED Beam 350	1			
52		LED Beam 350	1			
60		Fresnel 2 kW	1		L247	
80		lampe chambre Alice	1			
90		PAR 64	1	CP 60	L195	
91		PAR 64	1	CP 60	L195	
92		PAR 64	1	CP 60	L195	
93		PAR 64	1	CP 60	L195	
94		PAR 64	1	CP 60	L195	
95		PAR 64	1	CP 60	L195	
96		PAR 64	1	CP 60	L195	
100		PUBLIC	1			
200		bleus au lointain	1			
201		découpe LED 614	1			
202		découpe LED 614	1			
303		Unique Look Solution	1			
304		Unique Look Solution				
		<b>TOTAL</b>	46			

**SCENO AU GRILL UNE TRAVERSEE**

toutes les perches machinerie doivent être haubanées

- banne à neige
- étagère
- 80 lampe Alice
- moustiquaires x 7 avec poulie et système de langage

perches lum = 6,35 m  
perches machinerie = 7,4 m



UNE DECORS SALLES

ACCES DECORS PETIT THEATRE

MONTE DECORS  
6.20x2.20

ACCES JARDIN

PORTE ACCES DECORS  
L. 2,80x H. 3,60m

ACCES COUR

10  
9  
8  
7  
6  
5  
4  
3  
2  
1  
0  
-1  
-2  
-3  
-4

-9 -8 -7 -6 -5 -4 -3 -2 -1 0 1 2 3 4 5 6 7

ISSUE DE SECOURS  
PETIT THEATRE

ACCES PUBLIC

Accès public gradin haut

ACCES PUBLIC

FOYER PUBLIC

- pendrillon largeur 3m
- fond noir avec ouverture décentrée de 1,5 m
- Perche lumière
- Perche machinerie haubanée
- Perche machinerie haubanée + italiennes
- Perche lumière
- Perche machinerie haubanée
- Perche machinerie haubanée
- Perche lumière italiennes
- Perche machinerie haubanée
- Perche machinerie haubanée italiennes
- Perche lumière cadre de scène



**Charlotte Evrard** - Administrator and Production  
+32 479 77 43 68 // [administration@tchaika.art](mailto:administration@tchaika.art)

**Natasha Belova** - Artistic Director  
[direction@tchaika.art](mailto:direction@tchaika.art)

**Aurélie Perret** - Technical Director  
[aurele.perret@gmail.com](mailto:aurele.perret@gmail.com)



[www.tchaika.art](http://www.tchaika.art)



@tchaika  
@belovaiacobelli