

TCHAÏKA

by Natacha Belova and Tita Iacobelli



TECHNICAL RIDER

Casts and Credits

Direction and Dramaturgy **Natacha Belova** et **Tita Iacobelli**

Set Design and Puppets **Natacha Belova**

Performance **Tita Iacobelli**

External View **Nicole Mossoux**

Direction Assistant **Edurne Rankin**

Dramaturgy Assistant **Rodrigo Gijón**

Set Design Assistant **Gabriela González**

Lighting Design **Gabriela González** et **Christian Halkin**

Set Design **Guy Carbonnelle** et **Aurélie Borremans**

Sound Design **Gonzalo Aylwin** et **Simón González**

Music **Simón González** based on the song *La Pobre Gaviota* by Rafael Hernández

Lighting and effects management **Gauthier Poirier**

Production **Mars - Mons Art de la Scène - Bérengère Deroux** et **IFO Asbl**

Coproduction **Mars-Mons arts de la scène, Théâtre Des Martyrs à Bruxelles, Atelier Jean Vilar à Louvain-La-Neuve.**

Une production Ifo Asbl avec le soutien de Fondo Nacional para la Cultura y las Artes, Chili, de la Fédération Wallonie Bruxelles-arts de la scène-service interdisciplinaire

Created on 25th september 2021 at Charleville-Mézières – Festival Mondial des Théâtres de Marionnettes

Duration : 60 minutes

Audience: Age 12 and up

TECHNICAL CONTACT

technique@tchaika.art

Important information regarding the correct installation of the set-up and the running of the show.

This technical rider is part of the contract for Tchaïka. Changes must be talked over in advance with the company.

As the show takes place in a particularly dark atmosphere, it is essential that there is no "stray" light in the room or on stage.

Please let us know if there is a balcony.

I. STAGE

> **Dimension** can be adapted depending on the venue

Minimum stage opening : 8,50m

Minimum stage depth : 7m

Minimum height under perch : 5m

> **Floor : BLACK** - it must permit the easy rolling of a wheelchair

Please let us know if the stage has a slope

> A **black curtain** at the back of the stage

If the back wall is made of brick, we do not need a curtain at the back of the stage

> **Black Italian-style curtains**

> We need a **two-metre perch** in the middle of the stage to hang a curtain. The perch must be no more than 8m high (an essential set design element for the show to run smoothly).

The Company will provide the set design

II. LIGHTING

➔ To be provided by the organiser

- 31 circuit of 2kw
- 6 convex plan projector 650watts with barn doors
- 11 convex plan projector 1kw with barn doors

- 7 profil 1kw
- 4 Par 64 CP62
- 1 quartz 1kw asymeric
- Clean gelatins in appropriate quantities for the show (Lee filter : 201 / 205 / 249 / 328)
- Black fire proof Aluminium tape
- 1 gobo holder

All projectors must be in working order, perfectly clean and ready to be used.

→ The Company brings

- One computer with lighting software
- 4 snow machines,
- 1 fan
- 1 gobo

Please indicate the type of lighting console you will be using to host the show in your venue. It is essential that the lighting technician knows perfectly the console we will be working on for the pointing.

For further information or to adapt the lighting, please refer to the technical contact.

III. SOUND

Sound system

→ To be provided by the organiser

- One digital mixer capable of dynamic processing, reverb, delay and graphic eq for each output. FOH.

→ The Company brings

- One computer with sound software
- A wireless microphone

Diffusion

> 3 way P.A. system with a sound pressure level adjusted for the venue

> 2 monitors, 1 each side of the stage.

> **The lightboard and the audio mixer must be next to one another, facing the front of the stage and with no glass in between.**

REM : A single technician operates the 2 control systems

IV. Equipe & décor

> 4 people on tour

- 1 director ;
- 1 performer ;
- 1 producer ;
- 1 lighting and sound technician

> The set is made up of 4 suitcases weighing 23kg and 1 suitcase weighing 10kg

V. Planning and technicians required

> D-1

1 pre-assembly shift, with

- 2 lighting directors
- 1 stage manager
- 1 sound engineer

> D-0

3 shifts of 4 hours, with

- 1 lighting director (shifts 1-2-3)
- 1 sound engineer (shifts 1-3)
- 1 stage manager (shift 1)

> The Company's stage manager ensures the performance

> Dismantling - 1h

VI. Dressing Room and costume

We will need two heated dressing rooms with a toilet and shower room nearby, mirror and make-up light.

1 iron

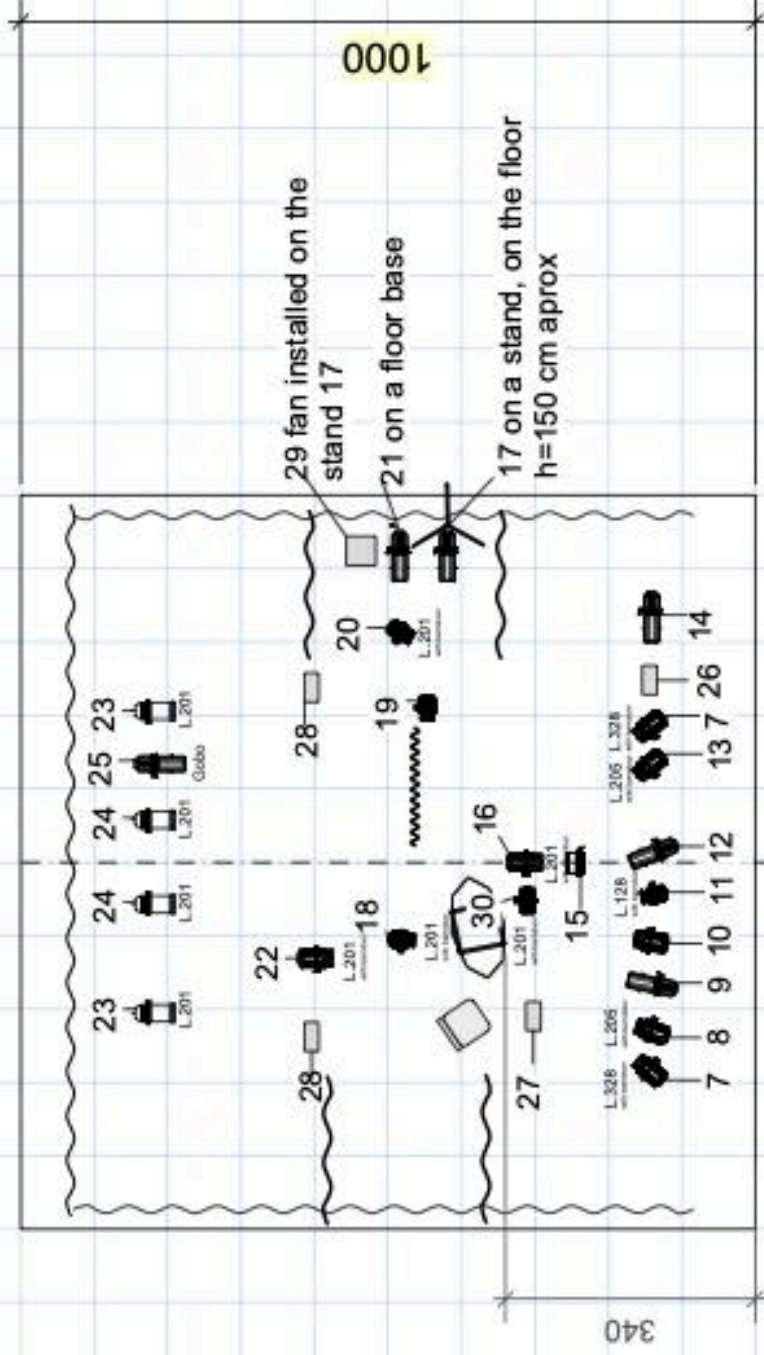
Catering : still and sparkling water / tea / coffee / dried fruit / nuts / cookies

Tchaika

Compania Belova-Iacobelli

Franco Penaloza Soto
 technique@belova-iacobelli.com
 +32 49 49 49 764

april 2023 scale 1/100



30 circuits 2Kw

6 x	Plano Convexe 650Watts
11 x	Plano Convexe 1.000Watts
7 x	Profile 25/50° 750Watts
4 x	Par64 CP62
1 x	Cyc lights 1.000Watts
4 x	Snow machine
1 x	Fan

The company provides

CONTACT

Technical director
technique@tchaika.art

Charlotte Evrard - Administration and Production
+32 479 77 43 68 // administration@tchaika.art

Natacha Belova - General director
direction@tchaika.art



www.tchaika.art



@tchaika
@belovaiacobelli